

**All Metal**

**The Professional  
Metal Contractors Choice**



## Exhaust System Ventilation

Breathe easy with our Domestic Housing Fascia Ventilation Solution, engineered to meet the latest National Construction Code (NCC) requirements.

- ✓ Eliminates unsightly vent tubes on the roof visible from the street.
- ✓ Reduces the risk of roof leaks through fewer roof penetrations.
- ✓ Is installed by fascia and gutter fitters, reducing WH&S concerns often found with other roof vent systems that are installed after edge protection has been removed.
- ✓ Reduces risk when installing the flexible ducts to mechanical fans. Ducts can be easily secured between the upper and lower truss chords, making connecting to mechanical fans quick and easy.



**The smarter and  
better looking way to  
vent from your roof**



# FasciaFlo® Overview

## Compliance Summary

FasciaFlo® has been designed to meet the requirements of the NCC 2022 Volume Two - Building Code of Australia and ABCB Housing Provisions Standard 2022 section 10.8.2, see below excerpt:

### 10.8.2 Exhaust Systems

1. An exhaust system installed in a kitchen, bathroom, sanitary compartment or laundry must have a minimum flow rate of:
  - (a) 25 L/s for a bathroom or sanitary compartment; and
  - (b) 40 L/s for a kitchen or laundry.
2. Exhaust from a kitchen, kitchen rangehood, bathroom, sanitary compartment or laundry must discharge directly or via a shaft or duct to outdoor air.
3. Where a venting clothes dryer is installed, it must discharge directly or via a shaft or duct to outdoor air.

## Purpose

**The purpose of this design is to provide an alternative means of ducting extraction fans to the atmosphere that may not currently be available in the context of a domestic home with no eaves.**

To date, the industry has been installing vent pipes onto roof surfaces to facilitate ducting of exhaust system discharge to the atmosphere on these types of dwellings. However, the installation of this fascia vent is not limited to dwellings with no eaves.

FasciaFlo® provides a means of ducting to the atmosphere by positioning the duct outlet at the fascia beneath the eaves gutter and between the trusses in a compact area. The duct chamber provides an expansion zone and interface between the round flexible duct and the rectangular vent cover plate. The vent cover plate openings exceed the area of the duct ensuring that there is no reduction in flow volume.

## Benefits include

### Enhanced Visual Appeal

Removal of unsightly vent tubes on the roof that are visible from the exterior. FasciaFlo® Cover plates can be color matched to the fascia, seamlessly blending in and reducing visual impact.

### Minimise Risk, Maximise Reliability

Reduces the risk of roof leaks with fewer roof penetrations and an easier, safer installation process. By positioning the flexible duct between the upper and lower truss chords rather than high within the roof frame, you can gain easy and safe access to the vent duct as opposed to a traditional roof vent.

### Simplified Installation

Requires fewer fixings than traditional roof vents, making installation quicker and more efficient.



### Duct Efficiency

Shorter ducting runs are possible since most sanitary compartments are located near outer walls, reducing the need for lengthy flexible ducting.

### Compatibility

Can be installed to domestic dwellings with eaves/no eaves, as well as all roof types.





## How it works

The FasciaFlo® Exhaust System Ventilation consists of two components, the 'Duct Chamber' and the 'Vent Cover Plate'.

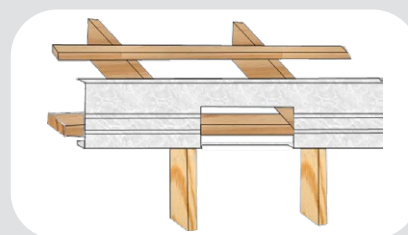
The duct chamber is inserted into the back of the fascia and sits within the perimeter of the fascia profile and provides the mechanism for attaching the flexible duct from the exhaust fan. The chamber is fitted with a stainless-steel mesh with apertures of 2mm to meet the requirements of AS3959:2018, section 8.6.6(e) and section 3.6.1 for use on BAL 12.5 – BAL 40. The vent cover plate is installed to the outer face of the fascia and provides aesthetic completion of the installation.

*FasciaFlo® has been designed to be connected to a single exhaust fan.*

### FasciaFlo® Cover Plate

BAL-12.5 to 40

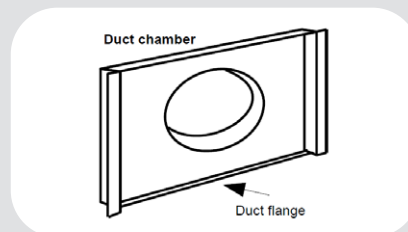
Manufactured from 1.0mm 5005 aluminium and available powder coated in all COLORBOND® steel colours.



### FasciaFlo® Chamber

BAL-12.5 to 40

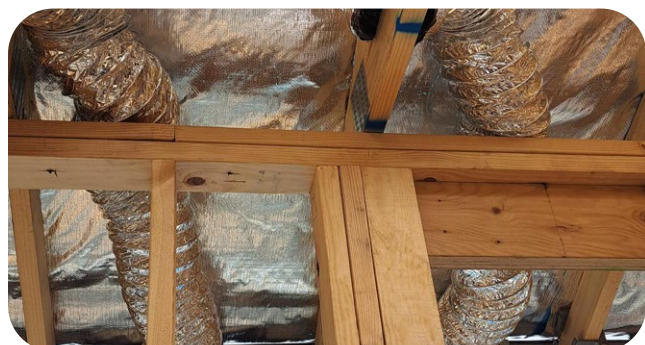
Manufactured from 0.8mm 5005 aluminium available powder coated in COLORBOND® steel colour **Monument® only**.



## Limitations

FasciaFlo® is designed to convey air from an exhaust system installed in a bathroom, sanitary compartment or laundry to the outside atmosphere external to a dwelling via a flexible 150mm duct, chamber and cover plate discharging through the fascia below the eaves gutter.

**FasciaFlo® is not designed for any purpose or for use in any location other than described in this document.**



# The Professional Metal Contractors Choice

## Wetherill Park

Unit 1, 171 – 175 Newton Road,  
WETHERILL PARK, NSW 2164

E: [salessyd@allmetalaust.com.au](mailto:salessyd@allmetalaust.com.au)

T: 02 9756 3737

## Padstow

2 Watson Road,  
PADSTOW, NSW 2211

E: [salespad@allmetalaust.com.au](mailto:salespad@allmetalaust.com.au)

T: 02 9772 4400

## Central Coast

8 Ace Crescent,  
TUGGERAH, NSW 2259

E: [salestug@allmetalaust.com.au](mailto:salestug@allmetalaust.com.au)

T: 02 4352 3111

## Newcastle

34 Huntingdale Drive,  
THORNTON, NSW 2322

E: [salesnew@allmetalaust.com.au](mailto:salesnew@allmetalaust.com.au)

T: 02 4062 0339

## Brookvale

27 Ethel Avenue,  
BROOKVALE, NSW 2100

E: [salesbro@allmetalaust.com.au](mailto:salesbro@allmetalaust.com.au)

T: 02 9939 5206

## Mt Kuring-Gai

2/6-10 Yatala Road,  
MOUNT KURING-GAI, NSW 2080

E: [sales@srbs.com.au](mailto:sales@srbs.com.au)

T: 02 8090 3483

## Wollongong

186 Princes Highway,  
ALBION PARK RAIL, NSW 2527

E: [saleswol@allmetalaust.com.au](mailto:saleswol@allmetalaust.com.au)

T: 02 4208 5980

With a stunning new choice of metal architectural products, All Metal (Australia) is a leading manufacturer of architectural panels, guttering, custom flashings and tradework in a range of metals such as COLORBOND® steel, ZINCALUME® steel, VM Zinc, Unicote LUX, stainless steel, PREFAB aluminium and copper. We also distribute to a wide range of roll form products and accessories to numerous industries. We hold up to 250 tonnes of coil at any time across our six manufacturing facilities in Sydney, Wollongong, Central Coast and Newcastle.

FasciaFlo® is patented: FasciaFlo Australian Provisional Patent Application No. 2021206787. Registered Trademark No. 2245969. COLORBOND® is a registered trademarks of BlueScope Steel Limited and ™ product names are trademarks of BlueScope Steel Limited.



[allmetalroofing.com.au](http://allmetalroofing.com.au)

**All Metal**