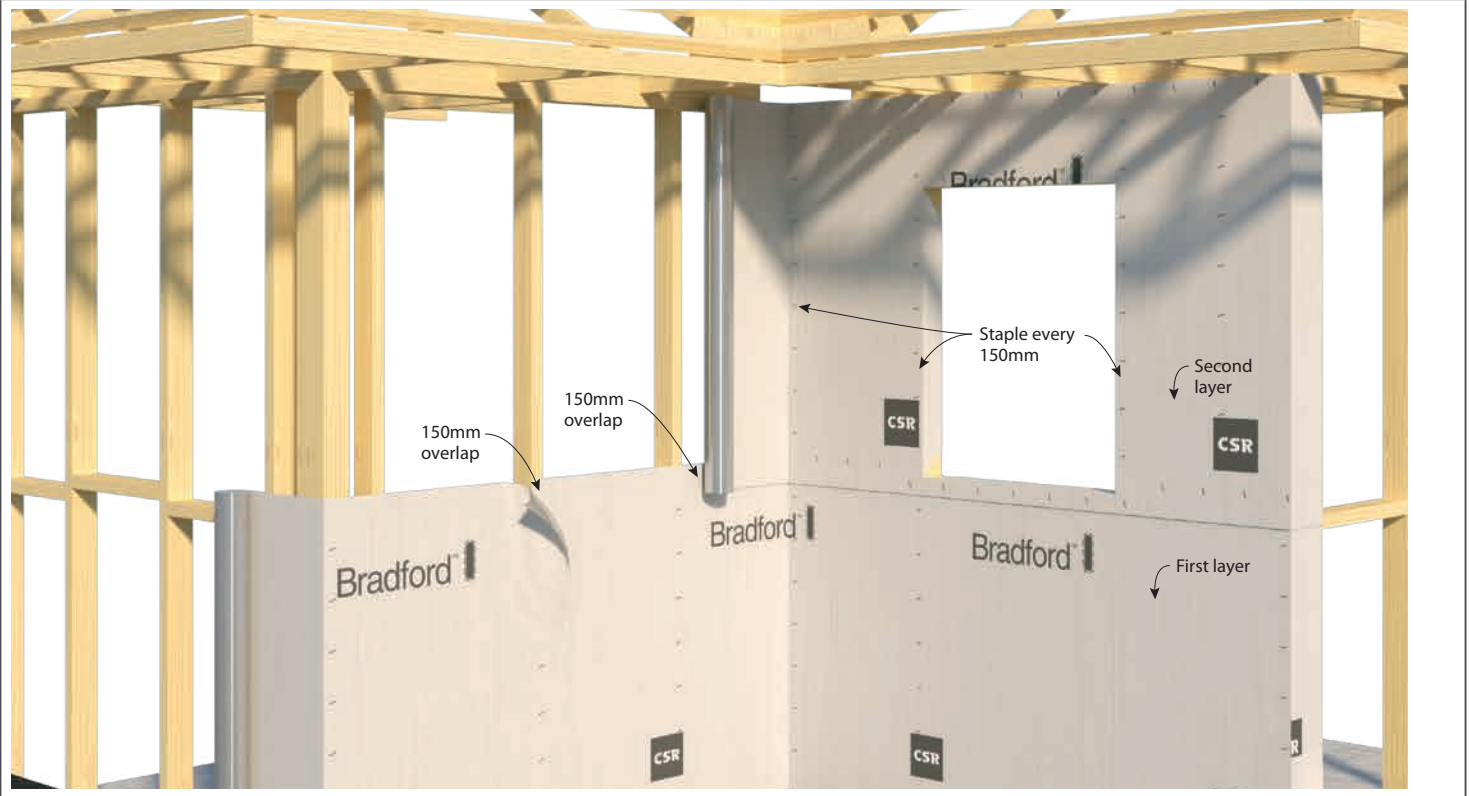


## WALL WRAP INSTALLATION GUIDANCE

### CLASS 1 RESIDENTIAL TIMBER AND METAL FRAMES

#### WALL WRAP INSTALLATION GUIDANCE



#### WALL WRAP INSTALLATION GUIDANCE

Wall wrap should be installed in accordance with AS/NZS 4200.2:2017 Pliable Building Membranes and Underlays - Installation.

Recommended instructions for a compliant installation:

- The printed, non-reflective or antiglare surface of this product must be installed facing outward.
- The product should be applied to a stud and rolled around the wall frame horizontally.
- When wrapping around corners, 150mm should extend around that corner.
- When applying a new roll horizontally it should overlap the previous roll by 150mm.
- **Timber frame:** Affix using galvanised staples/metal fixings every 150mm, where possible all overlaps and end joints should line up with a wall stud.
- **Metal Frame:** Affix using adhesive if cladding is directly fixed to the stud work, or; mechanical fixings with a broad headed washer at 300mm centres for cavity walls.
- When applying the top layer of wrap, it should overlap the bottom layer of wrap by 150mm.
- To create an air or vapour barrier, all overlaps should be sealed and taped.
- \* All damaged, punctured or torn material should be repaired or replaced to maintain the original properties of the product.
- \* When this product is being used as an air barrier, to achieve air tightness, it is recommended that the building have mechanical ventilation.
- \* For additional installation guidance, refer to AS/NZS 4200.2:2017.

#### WINDOW INSTALLATION GUIDANCE

Windows: Install in accordance AS/NZS4200.2 Pliable building membranes and underlays Part 2: Installation or window manufacturers recommended guidance.

If windows are already installed, flash in accordance with window manufacturers recommended instructions.

**Weather Exposure:** Wall wrap is a secondary sarking material and is not designed to withstand prolonged direct exposure to the elements - accordingly, the exterior cladding should be installed without delay. Product exposed to harsh weather conditions for more than 6 weeks for walls should be inspected for damage prior to installation of the exterior cladding and damaged product should be repaired or replaced to comply with the product warranty.