

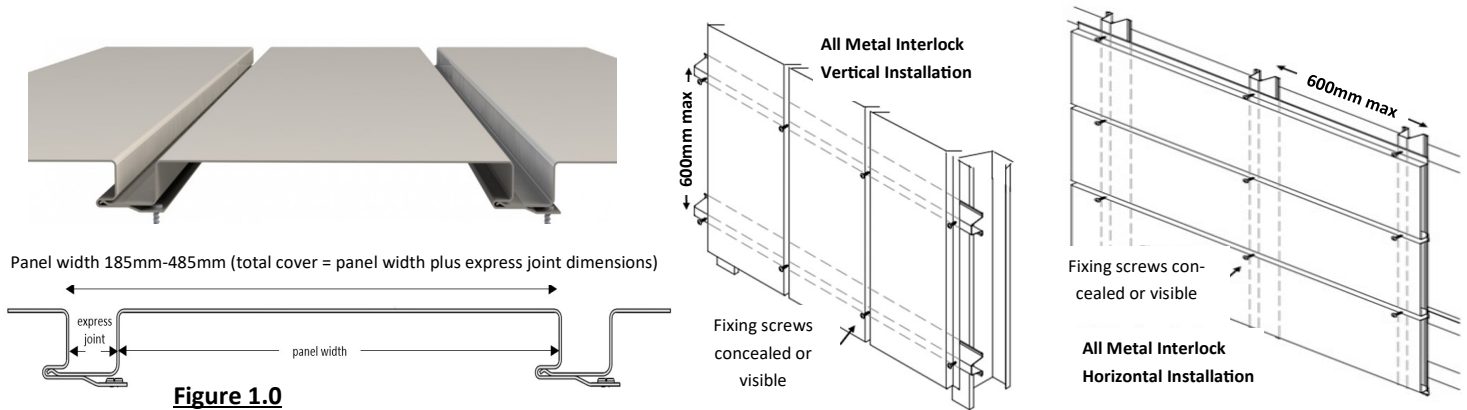
All Metal Interlock - Typical Fixing Detail



Installation

Used for commercial and residential applications, All Metal Interlock can be installed vertically, horizontally and diagonally. Ideal for wall cladding or internal ceilings panels, Interlock can be fixed directly to timber or steel battens. Battens are installed at right angles to the direction of the Interlock Panels. For concealed screw fixing, the grooved side of the panel is fixed directly to the substrate using wafer head screws and the leg of the following panel is located into the slot of the preceding fixed panel. When fixing horizontally, ensure that the female leg is always on the lower edge of the Interlock Panel.

Fixing screws for vertical and horizontal panels should be spaced at maximum 600mm centers.



Panel Dimensions (Figure 1.0)	Height 25mm	
Standard Panel Width (excluding express joint)	285mm	485mm
Custom Panel Width (excluding express joint)	185mm - 485mm	
Express Joint Width	standard: 15mm	custom: 0mm - 25mm
Base Metal Thickness	0.55mm, 0.70mm, 0.80mm BMT	
Panel Length	Up to 8m (longer lengths available on request)	
Fixing Screws, typical	Steel 10 - 16 X 16 Wafer Head Tek Timber 10 - 12 X 25 Wafer Head type 17	
Finishes	Colorbond®, Colorbond® Matt, Colorbond® Metallic, Colorbond® Ultra, UniCote® Lux, Magnaflow®, Zinalume®, Galvanised, Aluminium, Custom Colours are available. (MOQ and extended lead times may apply)	

All Metal Interlock - typical flashing and fixing detail - corners

Figure 2.1 Custom flashing folded to suit corner dimensions

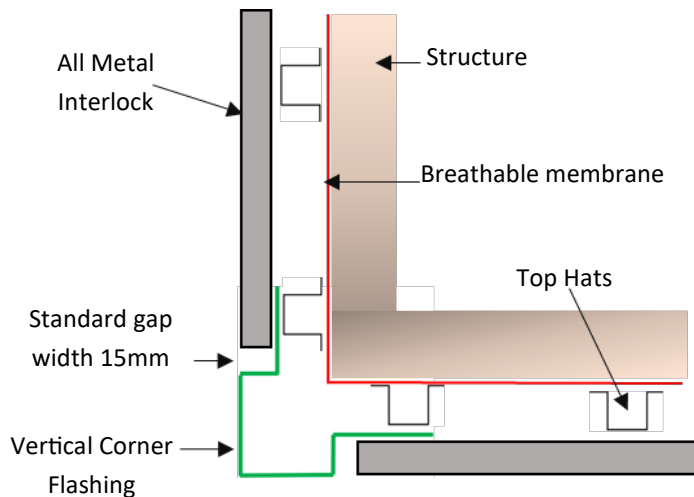


Figure 2.2 All Metal Interlock Panel folded to suit corner dimensions

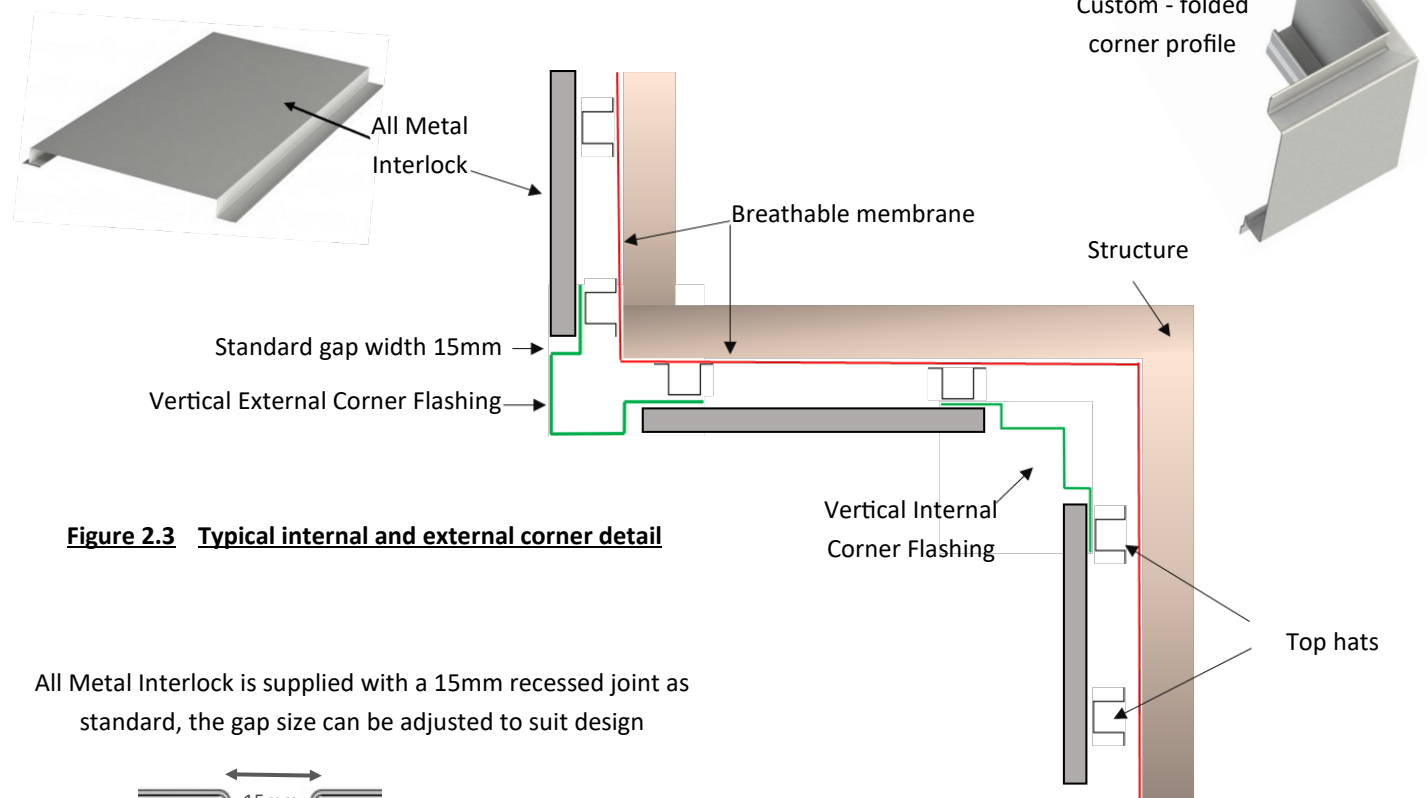
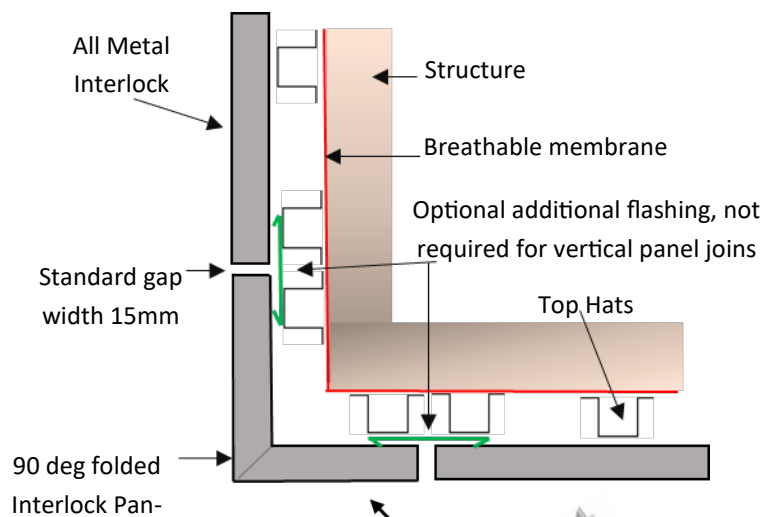
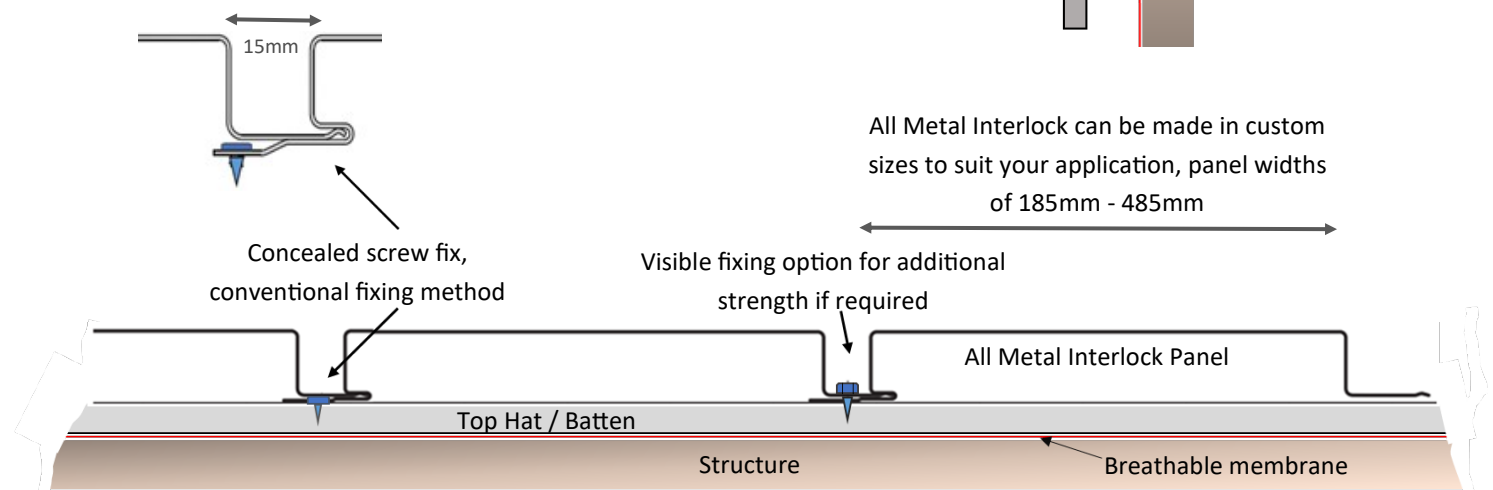


Figure 2.3 Typical internal and external corner detail

All Metal Interlock is supplied with a 15mm recessed joint as standard, the gap size can be adjusted to suit design



All Metal Interlock can be made in custom sizes to suit your application, panel widths of 185mm - 485mm

Figure 2.4 Screw fixing All Metal Interlock to top hat or ply backing

All Metal Interlock - typical flashing and fixing detail - windows

Figure 3.1 Window flashing - Vertical Panels

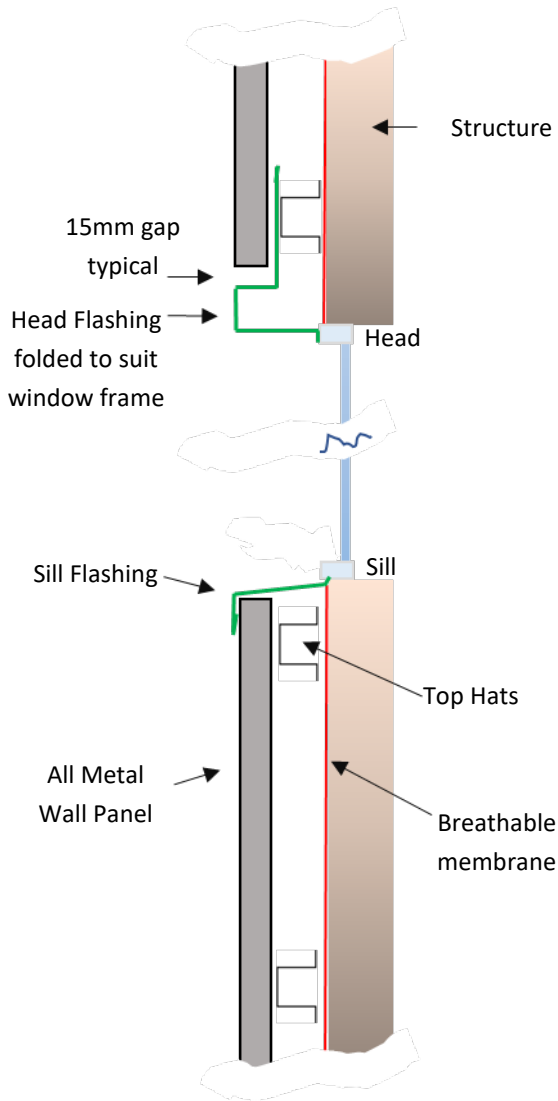


Figure 3.2 Window flashing - Horizontal Panels

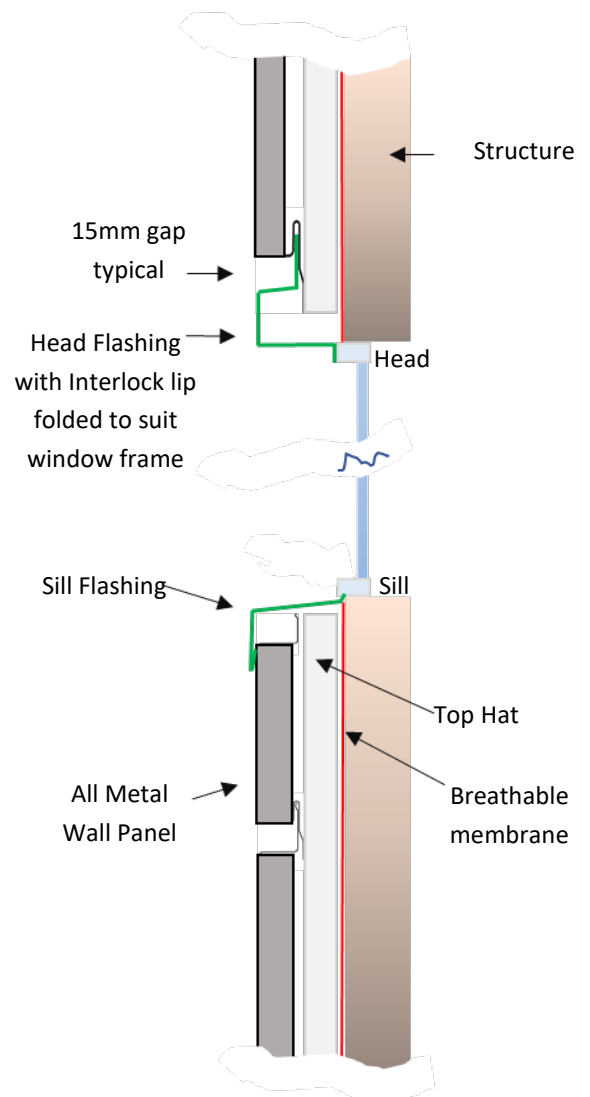


Figure 3.3

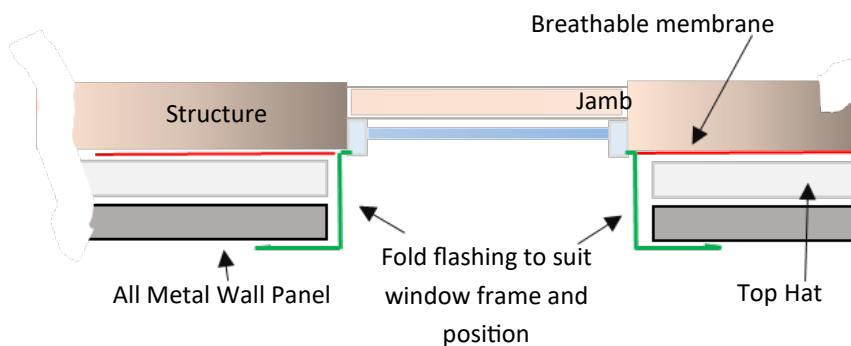
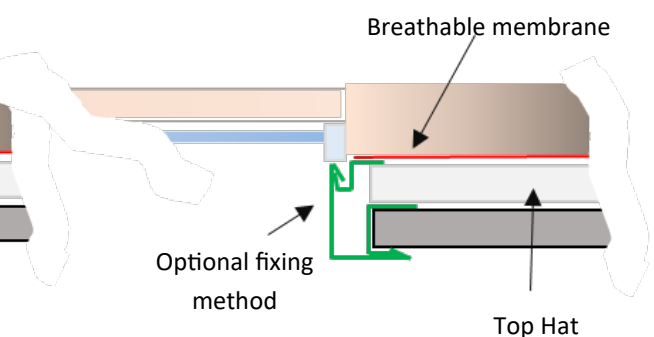


Figure 3.4



All Metal can close the ends of the panels if required and supply custom made starting and finishing panels. Our factory folded internal and external corner profiles can be made to suit your dimensions. Talk to us about custom curved panels or angle cutting. We have everything you need to complete your installation including accessories and specialised tools.

All Metal Interlock - typical flashing and fixing detail - wall

AMA Interlock installed vertically with typical flashing for a panel junction is shown below in figure 4.0. If Interlock panels are installed horizontally the male and female connection will be engaged and the panel junction flashing will not be required. Note: when panels are installed horizontally the male leg of the Interlock joint faces upwards as shown in figure 4.3.

Alternate flashings are shown in Figures 4.1a, 4.1b and 4.2. Custom flashings can be folded to suit specific site and project requirements, please talk to your All Metal representative for additional information.

Figure 4.0

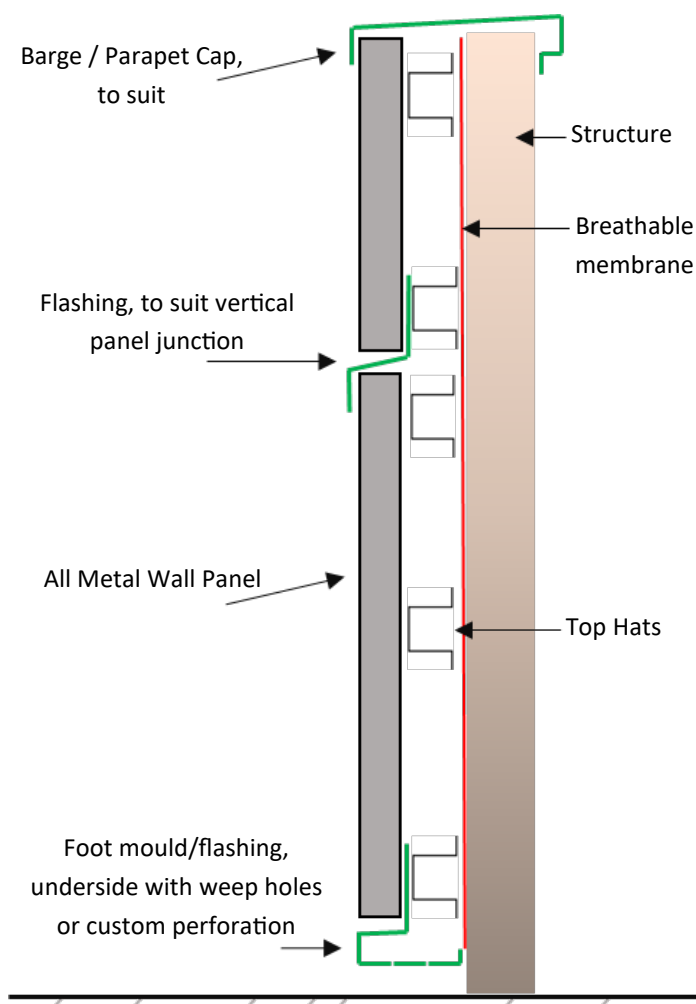


Figure 4.1a

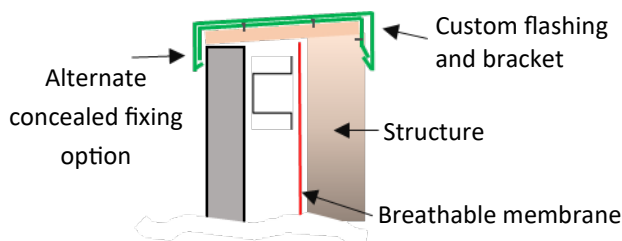


Figure 4.1b

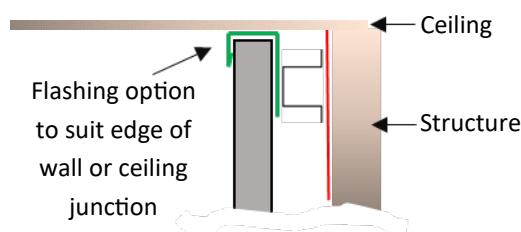


Figure 4.2

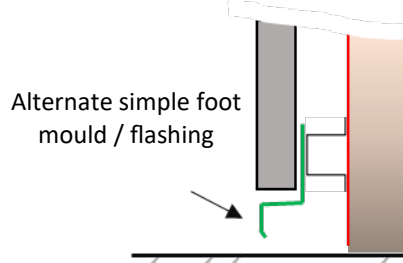


Figure 4.3



Notes

Installation details provided by All Metal are indicative only. Fixing methods vary based types of substrate used and location. The installer or designer should refer to the appropriate building codes for all matters regarding project compliance.

Tolerance: All Metal will endeavour to produce finished products exactly as per the requested dimensions, please note that small variations can occur when folding or roll-forming products and as a result $\pm 4\text{mm}$ will be deemed to be within acceptable tolerance.

Fire Safety: All Metal Interlock is made using material that has been independently tested in accordance with AS 1530.3. The test measures, Ignitability Index, Spread of Flame Index, Heat Evolved Index and Smoke Developed Index and are deemed non-combustible as per the National Construction Code of Australia in accordance with clauses C1.19.(e).(v) and 3.7.1.1 (e)

Oil Canning: When using any light gauge flat metal products, a ripple effect may become visible in areas of an installation. The condition is normally related to thermal movement. It can be minimized by taking due care during the installation process and avoiding excessively large flat pans or high gloss finishes, Oil canning is not a defect of the finished product and does not adversely affect the warranty or durability of the material and as such does not warrant rejection of the finished product. For more information please refer to our Oil Canning information sheet.



Wetherill Park
Unit 1, 171-175 Newton Road
Wetherill Park NSW 2164
Ph. 02 9756 3737
salessyd@allmetalaust.com.au

Tuggerah
8 Ace Cres
Tuggerah NSW 2259
Ph. 02 4352 3111
saletug@allmetalaust.com.au

Padstow
2 Watson Road
Padstow NSW 2211
Ph. 02 9772 4400
salespad@allmetalaust.com.au